

Market Commentary

Overnight global action:

On 4th May 2026, US market delivered a negative performance with S&P500 down by -33.67 pts (-0.47%), Dow Jones down by -484.41 pts (-0.98%) and Nasdaq down by -83.08 pts (-0.3%). Gift Nifty grew by 27.5 pts (0.11%) indicating Indian markets will open positively. Advance-Decline ratio on NSE was 2136:1185 and on BSE was 2534:1818 which showed balance in the overall markets.

Index Options Data Analysis:

Sensex max call OI is at 78000 max put OI is at 77000 with PCR of 0.7
Nifty max call OI is at 24500 max put OI is at 24000 with PCR of 0.61
Nifty max call OI and put OI both are at 55000 with PCR of 0.84

Securities in Ban for F&O Trade:

NIL

Sector Performance:

NIFTY AUTO index grew by 0.42% driven by Eicher Motors Ltd. (+3.1%) and Maruti Suzuki India Ltd. (+2%)

NIFTY FMCG index grew by 0.38% driven by Colgate-Palmolive (India) Ltd. (+3.7%) and Emami Ltd. (+2.6%)

NIFTY REALTY index grew by 2.41% driven by Anant Raj Ltd. (+4.8%) and Godrej Properties Ltd. (+3.52%)

NIFTY OIL & GAS index grew by 0.33% driven by Aegis Logistics Ltd. (+2.5%) and Reliance Industries Ltd. (+2.26%)

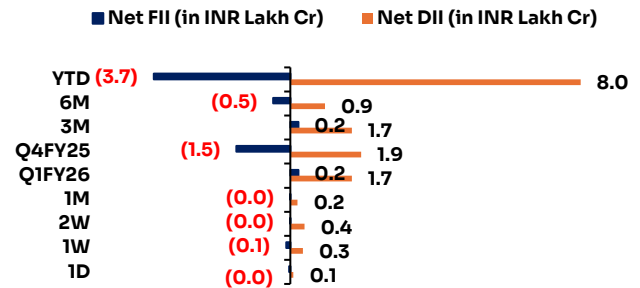
NIFTY CHEMICALS Index grew by 0.69% driven by Sumitomo Chemical India Ltd. (+7.1%) and PCBL Chemical Ltd. (+6.51%)

NIFTY PSU BANK index declined by -0.32% driven by Indian Bank (-2.5%) and Central Bank Of India (-2.52%)

Now listen to the daily market update



Fund Flow	Buy	Sell	Net
FII/FPI	19,660	16,825	2,836
DII	19,516	14,752	4,764



Indian Indices	CMP	1D	YTD	P/E x
Gift Nifty	24,038	0.1%	-7.9%	21.8
Sensex 30	77,269	0.5%	-9.3%	20.2
Nifty 50	24,119	0.5%	-7.7%	21.9
India VIX	18	-1.0%	92.9%	
Nifty Bank	54,879	0.0%	-7.9%	16.2
Nifty Next 50	70,284	0.9%	1.3%	70.3
Nifty 500	22,831	0.7%	-4.4%	21.4
Nifty Mid 100	60,160	0.6%	-0.5%	30.9
Nifty Small 250	16,896	1.0%	1.3%	28.4
USD/INR	95	0.5%	6.0%	
India 10Y	7.0%			
India 2Y	6.4%			
India 1Y	5.9%			
Bank Rate	5.8%			

Global Indices	CMP	1D	YTD	P/E x
S&P 500	7,196	-0.5%	5.6%	31.2
Dow Jones	49,015	-1.0%	3.0%	23.7
Nasdaq 100	27,627	-0.3%	9.7%	45.4
FTSE 100	10,364	-0.1%	4.4%	16.3
CAC 40	7,976	-1.7%	-1.5%	23.4
DAX	24,036	-1.1%	-1.2%	25.1
Nikkei 225	59,513	0.4%	18.2%	31.8
Hang Seng	26,096	1.2%	1.8%	12.7
Shanghai Cor	4,112	0.1%	3.6%	18.6
KOSPI	6,937	5.1%	64.6%	34.3
S&P/ASX 200	8,697	-0.4%	-0.2%	22.9

Stocks in the News

RELIANCE INDUSTRIES LTD. (CMP: 1463, MARKET CAP: 1979743 Cr., SECTOR: REFINERIES)

RIL announced on May 6, 2026, the successful commissioning of its first 10GW solar glass manufacturing facility in Gujarat. This vertical integration is expected to reduce module manufacturing costs by 15%, enhancing the green energy segment's EBITDA margins. The stock is currently testing a multi-month resistance level at ₹3,150 with heavy institutional volume. [Reliance Industries Economic Times](#)

HDFC BANK LTD. (CMP: 778, MARKET CAP: 1197619 Cr., SECTOR: BANK - PRIVATE)

The lender disclosed on May 6 that its gross advances grew by 18% YoY for the period ending April 2026, led by a sharp recovery in commercial and rural banking. The bank has successfully maintained its LDR (Loan-to-Deposit Ratio) below 90% following aggressive deposit mobilization. Analysts maintain a 'Strong Buy' as the post-merger synergy benefits start reflecting in the lower cost of funds. [HDFC Bank Bloomberg](#)

DR. REDDY'S LABORATORIES LTD. (CMP: 1573, MARKET CAP: 26377 Cr., SECTOR: HOSPITAL & HEALTHCARE SERVICES)

Reporting Q4FY26 results on May 6, the company posted a 12% YoY increase in consolidated net profit to ₹1,450 crore. Growth was primarily driven by the North American generics market and a 20% surge in the biosimilars portfolio in emerging markets. Management provided guidance of high single-digit revenue growth for FY27 despite ongoing price erosion in the US. [Dr. Reddy's Moneycontrol](#)

BHARAT ELECTRONICS LTD. (CMP: 434, MARKET CAP: 316952 Cr., SECTOR: DEFENCE)

BEL secured a major ₹3,800 crore contract on May 6 from the Ministry of Defence for the supply of advanced electronic warfare suites for the Indian Air Force. The company's total order book has now crossed ₹80,000 crore, providing revenue visibility for the next 4-5 years. Technical indicators show the stock entering a fresh breakout zone above ₹240. [BEL Business Standard](#)

Sectoral Inde	CMP	1D	YTD	P/E x
Nifty Auto	26,028	0.4%	-7.7%	21.4
Nifty IT	29,076	-1.0%	-23.3%	22.7
Nifty Fin Ser	25,814	0.6%	-6.5%	16.9
Nifty Pharma	23,476	0.9%	3.3%	38.6
Nifty Services	30,273	0.1%	-10.1%	33.3
Nifty Cons Du	37,411	0.4%	1.8%	50.7
Nifty PSE	10,680	0.5%	8.4%	11.2
Nifty FMCG	51,266	0.4%	-7.6%	35.3
Nifty Pvt Bank	26,247	-0.1%	-8.6%	9.8
Nifty PSU Banl	8,456	-0.3%	-0.9%	13.8
Nifty Cons	11,444	0.2%	-6.9%	40.4
Nifty Realty	813	2.4%	-7.4%	35.3
Nifty Infra	9,471	0.6%	-1.5%	22.0
Nifty Energy	40,970	0.5%	16.0%	13.0
Nifty Health	15,072	1.0%	3.0%	36.1
Nifty India Mfg	15,694	0.9%	1.8%	29.2
Nifty Metal	12,973	1.1%	16.2%	23.2
Nifty Oil & Gas	11,733	0.3%	-4.1%	18.0

Derivatives Position (Combined#)

Stock	% Chg OI	%Chg LTP
Long		
FORCEMOT	197.5	1.8
VMM	146.1	2.6
ADANIPOWER	100.9	1.8
MOTILALOFS	20.2	0.7
PRESTIGE	10.1	0.6
Short		
GODFRYPHLP	251.0	-0.3
NAM-INDIA	87.5	-4.3
COCHINSHIP	65.7	-2.1
HYUNDAI	55.5	-0.5
PGEL	14.9	-5.8
Long Unwinding		
BPCL	-8.4	-1.1
UNIONBANK	-6.8	-0.8
ADANIPORTS	-3.6	-0.6
SUPREMEIND	-2.7	-0.8
HINDPETRO	-2.5	-3.2
Short Unwinding		
COFORGE	-5.6	5.0
JSWENERGY	-3.6	2.3
PNB	-3.5	0.4
SBIN	-3.3	0.1

MARUTI SUZUKI LTD. (CMP: 13582, MARKET CAP: 427017 Cr., SECTOR: AUTOMOBILES - PASSENGER CARS)

The automaker announced on May 6 a strategic partnership with a global solid-state battery firm to co-develop long-range EV platforms for the Indian market. This move aims to address range anxiety in the mid-SUV segment where Maruti currently lags competitors. The company targets a 15% EV sales mix by FY29.

Maruti Suzuki [Financial Express](#)

Commodity:	CMP	1D	YTD
Gold (\$)	4,534	-2.4%	0.3%
Silver (\$)	73.5	-3.9%	0.1%
Brent Oil (\$)	114.3	5.7%	-0.2%
WTI Oil (\$)	105.6	3.5%	-20.6%

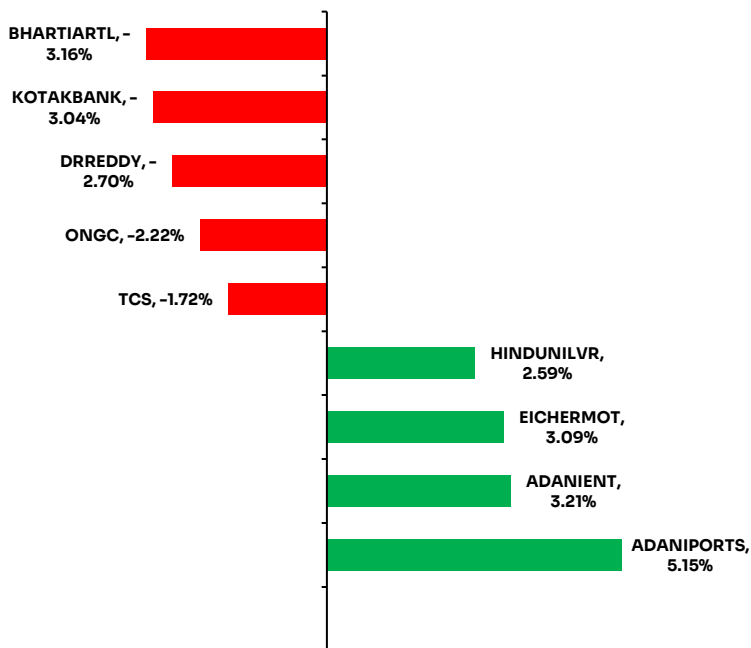
Currency	CMP	1D	YTD
USD/INR	95.1	0.2%	0.0%
EUR/INR	111.2	0.0%	0.1%
GBP/INR	128.7	-0.1%	0.1%
JPY/INR	0.6	0.1%	0.1%
EUR/USD	1.2	-0.2%	0.1%

Securities Lending & Borrowing Scheme (SLBS)

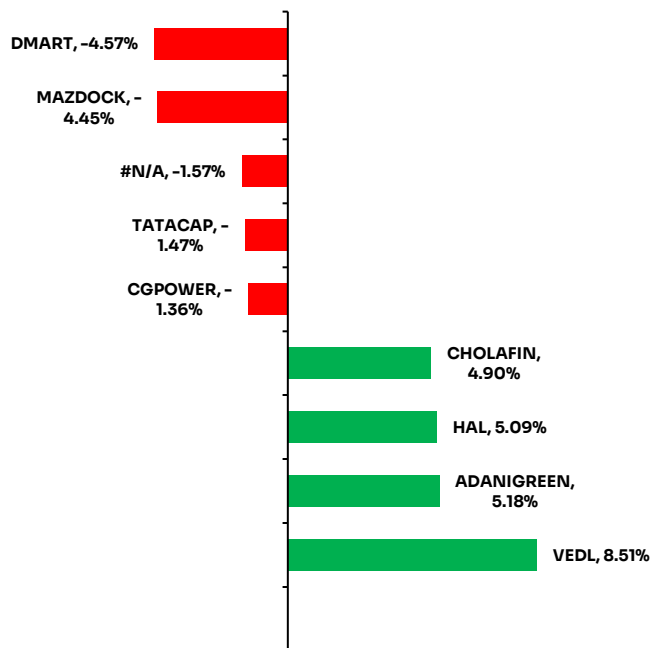
Company	Under.Ltp	Fut.Ltp	Spread (%)
WIPRO	200.91	196.09	2.4
HYUNDAI	1,845.90	1,815.80	1.63
OFSS	9,720.00	9,611.00	1.12
RVNL	298	295.15	0.96
PREMIERENE	1,035.90	1,026.70	0.89

Top Gainers and Losers

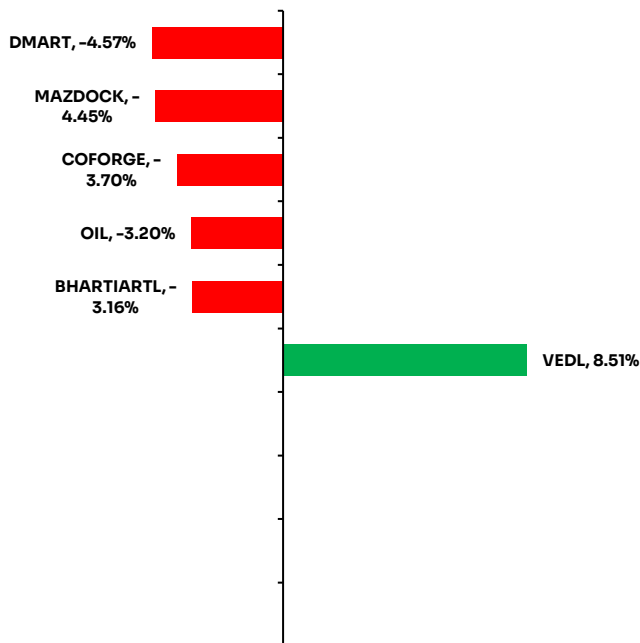
Nifty 50 index



Nifty Next 50 index



Nifty 200 index



52 Week High

Stock	LTP	New 52W high	Prev 52W high	Prev 52W high date
ADANIPOWER	228	234	226	29-Apr-26
BAJAJ-AUTO	10,151	10,478	10,187	26-Feb-26
CUMMINSIND	5,285	5,349	5,325	29-Apr-26
BHEL	379	399	358	29-Apr-26
ASTERDM	741	770	732	23-Oct-25

52 Week Low

Stock	LTP	New 52W low	Prev 52W low	Prev 52W low date
KFINTECH	866	857	866	18-Jan-26

Volume Shockers

Stock	Vol (000)	1W avg vol (000)	2W avg vol (000)	LTP (INR)
BANK10ADD	47,546	34	37	16
EBANKNIFTY	369	4	6	55
SIS	3,632	58	57	404
BOMDYEING	26,927	446	625	128
LALPATHLAB	8,281	220	331	1,564
IFBAGRO	459	14	18	1,040
ESABINDIA	146	5	5	7,040
VARDHACRLC	696	25	20	43
EQUITASBNK	51,261	1,822	1,855	71
ATAM	133	5	6	79
IWP	48	3	2	34
STANLEY	2,994	169	248	166
EPIGRAL	838	51	53	1,329
DBREALTY	17,245	1,248	1,496	124
ONWARDTEC	432	31	29	252
MOMNC	23	2	14	32
ASTERDM	11,164	883	752	741
CHOLAHLDNG	2,815	227	199	1,670
DCMNVL	137	11	11	171
PKTEA	1	0	0	869
UNIVCABLES	982	97	87	985
ORIENTHOT	1,381	148	167	100
ECAPINSURE	468	51	66	24
CROWN	115	13	23	140
SINCLAIR	86	10	17	82

Bulk Deals

Security Name	Client Name	Buy / Sell	Qty (in 000)	Price (in 000)
AGIIL	Arihant Capital Markets Limited	SELL	2323	410.3
AGIIL	Arihant Capital Markets Limited	BUY	2356	410.8
AGIIL	Hrti Private Limited	SELL	605	409.7
AGIIL	Hrti Private Limited	BUY	627	410.0
CEMPRO	Junomoneta Finsol Private Limited	SELL	1133	904.5
CEMPRO	Microcurves Trading Private Limited	SELL	1083	914.1
CEMPRO	Microcurves Trading Private Limited	BUY	1084	913.9
CEMPRO	Nk Securities Research Private Limited	SELL	1343	915.3
CEMPRO	Nk Securities Research Private Limited	BUY	1343	914.9
CEMPRO	Qe Securities Llp	SELL	873	901.0
CEMPRO	Qe Securities Llp	BUY	889	903.9
DHARARAIL	India Max Investment Fund Limited	SELL	80	124.7
GICL	Inventure Growth & Securities Ltd	SELL	425	41.4
GICL	Inventure Growth & Securities Ltd	BUY	600	40.9
IDEAFORGE	Hrti Private Limited	BUY	292	704.2
IDEAFORGE	Hrti Private Limited	SELL	311	705.2
IDEAFORGE	Societe Generale	BUY	244	707.1
IRMENERGY	Hrti Private Limited	SELL	486	357.1
IRMENERGY	Hrti Private Limited	BUY	582	353.5
IRMENERGY	Junomoneta Finsol Private Limited	BUY	475	355.0
IRMENERGY	Junomoneta Finsol Private Limited	SELL	475	355.2
IRMENERGY	Nk Securities Research Private Limited	SELL	325	355.3
IRMENERGY	Nk Securities Research Private Limited	BUY	325	355.2
IRMENERGY	Qe Securities Llp	SELL	212	357.0
IRMENERGY	Qe Securities Llp	BUY	212	355.2
KOTYARK	Gaurang R Shah Huf	SELL	135	413.1
KRMAYURVED	Pine Oak Global Fund	SELL	113	235.6
KSOLVES	Varun Mehra	BUY	186	287.0
KSOLVES	Varun Mehra	SELL	209	282.7
MACOBSTECH	Acme Capital Market Limited	BUY	51	242.0
MACOBSTECH	Connect Fund	SELL	165	244.5
MACOBSTECH	Raman Talwar	BUY	132	244.4
MARKOLINES	Vistaar Trading Service Private Limited	BUY	120	153.9
MARKOLINES	Vistaar Trading Service Private Limited	SELL	126	153.7
NIDAN	Vaghani Viraj	SELL	80	13.2
OLIL	Matalia Stock Broking Private Limited	BUY	37	405.6
OLIL	Matalia Stock Broking Private Limited	SELL	38	380.4
RATNAVEER	Arihant Capital Markets Limited	BUY	762	175.5
RATNAVEER	Arihant Capital Markets Limited	SELL	762	176.1
RHETAN	Niraj Harsukhlal Sanghavi	SELL	3651	28.3
RHETAN	Niraj Harsukhlal Sanghavi	BUY	4882	28.0
RICHA	Thakor Nayana Chandubhai	SELL	97	78.0
SAIFL	Satya Murthy Sivalenka	SELL	752	8.3
SILGO	Goldendunes Builders And Developers Private Limited	SELL	163	78.6

Security Name	Client Name	Buy / Sell	Qty (in 000)	Price (in 000)
SPRL	Amnesti Multiservices Private Limited	SELL	27	98.9
SPRL	Sukhmata Dharampal Nishad	BUY	15	98.9
STANLEY	Vision Ahead Services Private Limited	BUY	300	160.4
VIDYAWIRES	Hrti Private Limited	SELL	991	91.4
VIDYAWIRES	Hrti Private Limited	BUY	1078	91.6

Block Deals

Security Name	Client Name	Buy / Sell	Qty (in 000)	Price (in 000)
---------------	-------------	------------	--------------	----------------

Insider Trading

Company Name	Person Name	Person Category	Buy / Shareholding pri	Shareholding post	Trade Price
CINELINE	https://nsearchives.nsei	Original	0 ate/xbrl/xml_IT_	0.00	NA
CINELINE	https://nsearchives.nsei	Original	0 ate/xbrl/xml_IT_	0.00	NA

Event Calendar – Corporate Action (Financial Results/ Dividend/other business matters)

Company	Purpose
Aarti Industries Limited	Financial Results/Divide
Aditya Birla Capital Limited	Financial Results/Fund F
Ambuja Cements Limited	Financial Results/Dividend
Antelopus Selan Energy Limited	Financial Results
Ather Energy Limited	Financial Results
AVG Logistics Limited	Board meeting Resched
AVG Logistics Limited	Fund Raising
Bharat Heavy Electricals Limited	Financial Results
Bharat Heavy Electricals Limited	Dividend
Bodhi Tree Multimedia Limited	Fund Raising
Computer Age Management Service	Financial Results/Divide
CSB Bank Limited	Financial Results
De Nora India Limited	Financial Results/Divide
Exide Industries Limited	Financial Results/Divide
Godrej Properties Limited	Financial Results/Divide
IIFL Capital Services Limited	Financial Results/Other
Jaiprakash Power Ventures Limited	Financial Results
Jindal Stainless Limited	Financial Results/Divide
Jyothy Labs Limited	Financial Results/Divide
KEI Industries Limited	Financial Results
Kothari Sugars And Chemicals Limit	Financial Results
Krishival Foods Limited	Financial Results/Divide
Latent View Analytics Limited	Financial Results
Latent View Analytics Limited	Board meeting Resched
Manappuram Finance Limited	Financial Results/Divide
Nath Bio-Genes (India) Limited	Financial Results/Divide
Oriental Hotels Limited	Financial Results/Divide
Petronet LNG Limited	Financial Results/Divide
Premier Energies Limited	Dividend
Quess Corp Limited	Financial Results/Divide
SecUR Credentials Limited	Financial Results
SecUR Credentials Limited	Financial Results
SecUR Credentials Limited	Financial Results
SG Mart Limited	Financial Results
Sobha Limited	Financial Results/Divide
Somany Ceramics Limited	Dividend
South West Pinnacle Exploration Lir	Financial Results/Other business matters
Tata Chemicals Limited	Financial Results/Dividend
Tata Technologies Limited	Financial Results/Dividend
Wockhardt Limited	Financial Results/Fund Raising

Nifty & Bank Spot – Pivot Levels 05/05/2026

	Closing	Support			Resistance		
		1	2	3	1	2	3
Nifty	24119	23985	23851	23699	24271	24423	24557
Bank Nifty	54878	54533	54188	53654	55412	55946	56291

Arkade Developers Ltd – Technical Stock Call – 05/05/2026

Technical Stock Call	Action	Reco	Target	Support	SL
Arkade Developers Ltd	BUY	125.99	165	(122-117-112)	107



View – Short Term Bullish

The stock commenced its downtrend from 213.69 (JUL 25). Forming Lower Tops, the stock traded below the averages indicating selling pressure from higher levels & extended the decline to mark a low of 92.62 (MAR 26).

However, the stock traded around the averages seeking trend direction & entered into a narrow consolidation zone during the period JUL 25_MAR 26. In the month of April 2026, the stock attracted buying interest & commenced its up move reaching a high of 120.49, formed higher bottoms & recently, the stock has given a breakout from **Descending Channel** supported by volume reaching to a high of 128.51 (MAY 26), which is higher than the previous swing highs.

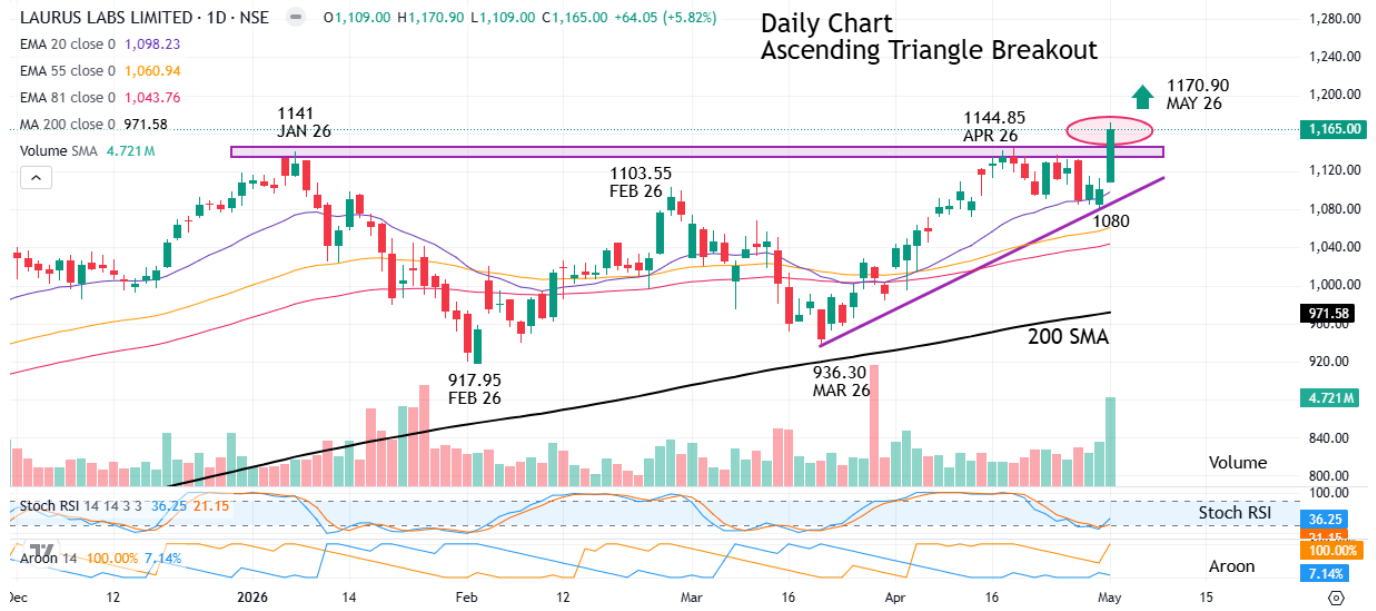
The Bullish breakout candle confirms a trend reversal and strength in the current up move. MACD, Aroon & Williams %R indicators suggest Positive crossover.

Target of **165** is expected with lower support levels at **(122-117-112)** in case of intermediate fall. A stop loss at **107** is to be followed for the trade.

All the calls/opinions are subject to Disclosures and Disclaimer <http://goo.gl/8bCMyQ>

Laurus Labs Ltd – Technical Stock Call – 05/05/2026

Technical Stock Call	Action	Reco	Target	Support	SL
Laurus Labs Ltd	BUY	1165	1500	(1135-1108)-1090-(1072-1048)	1011



View – Medium Term Bullish

The stock commenced its downtrend from 1141 (JAN 26). The stock traded below the averages forming lower lows & reaching a low of 917.95 (FEB 26).

The stock attracted buying interest & commenced its up move forming Up Gaps further rallied to mark a high of 1103.55 (FEB 26), but could not sustain above the previous high of 1141 (JAN 26) & gave a valid correction reaching a low of 936.30 (MAR 26). Again Buying emerged & the stock commenced its up move reaching a high of 1144.85 (APR 26), but could not sustain in that area & later, a minor correction followed.

However, the stock traded around the averages between 917.95 – 1144.85 (FEB 26_ APR 26), seeking trend direction. Also as visible in the charts, the stock has formed a well-defined base around at 917 level suggesting bounce back & support on each corrective move. Recently in APR 2026, after forming higher bottoms at 1080 the stock has given a **Ascending Triangle Breakout** supported by volume reaching a high of 1170.90 (MAY 26), which is higher than the previous swing highs of 1141 (JAN 26) & 1144.85 (APR 26).

Stoch RSI & Aroon indicators suggest Positive uptrend. The **200 SMA** is in rising mode.

Target of **1500** is expected with lower support levels **(1135-1108)-1090-(1072-1048)** in case of intermediate fall.

A stop loss at **1011** is to be followed for the trade.

All the calls/opinions are subject to Disclosures and Disclaimer

<http://goo.gl/8bCMyQ>

Global Macro Events (5 th May 2026)			
Event	Previous	Forecasted	
India			
USA			
Treasury Refunding Financing Estimates			
LMI Logistics Managers Index APR	65.7		
Building Permits Final MAR		1.35M	
Building Permits Final FEB	1.386M		
Building Permits MoM Final FEB	-0.047		
Building Permits MoM Final MAR			
Balance of Trade MAR	\$-57.3B	\$-61.4B	
Exports MAR	\$314.8B	\$319.1B	
Imports MAR	\$372.1B	\$380.5B	
Redbook YoY MAY/02	0.077		
S&P Global Composite PMI Final APR	50.3		52
S&P Global Services PMI Final APR	49.8		51.3
ISM Services PMI APR	54		53.7
JOLTs Job Openings MAR	6.882M	6.9M	
Fed Bowman Speech			
New Home Sales FEB	0.587M	0.61M	
New Home Sales MAR		0.64M	
New Home Sales MoM MAR			0.049
New Home Sales MoM FEB	-0.176		0.039
ISM Services Business Activity APR	53.9		53.5
ISM Services Employment APR	45.2		45
ISM Services New Orders APR	60.6		60
ISM Services Prices APR	70.7		71
JOLTs Job Quits MAR	2.974M	2.95M	
RCM/TIPP Economic Optimism Index MAY	42.8		45
NY Fed Bill Purchases 1 to 4 months			
Total Household Debt Q1	\$18.8T		
6-Week Bill Auction	0.0359		
Fed Barr Speech			
China			
National People's Congress Standing Committee			
Great Britain			
New Car Sales YoY APR	0.066		0.051
BoE Woods Speech			
Germany			
10-Year Bund/g Auction	0.03		
5-Year Bund/g Auction			

##STOCK SPECIFIC NEWS

Reliance Industries

RIL announced on May 6, 2026, the successful commissioning of its first 10GW solar glass manufacturing facility in Gujarat. This vertical integration is expected to reduce module manufacturing costs by 15%, enhancing the green energy segment's EBITDA margins. The stock is currently testing a multi-month resistance level at ₹3,150 with heavy institutional volume. **Reliance Industries** [Economic Times](#)

HDFC Bank

The lender disclosed on May 6 that its gross advances grew by 18% YoY for the period ending April 2026, led by a sharp recovery in commercial and rural banking. The bank has successfully maintained its LDR (Loan-to-Deposit Ratio) below 90% following aggressive deposit mobilization. Analysts maintain a 'Strong Buy' as the post-merger synergy benefits start reflecting in the lower cost of funds. **HDFC Bank** [Bloomberg](#)

Dr. Reddy's Laboratories

Reporting Q4FY26 results on May 6, the company posted a 12% YoY increase in consolidated net profit to ₹1,450 crore. Growth was primarily driven by the North American generics market and a 20% surge in the biosimilars portfolio in emerging markets. Management provided guidance of high single-digit revenue growth for FY27 despite ongoing price erosion in the US. **Dr. Reddy's** [Moneycontrol](#)

Bharat Electronics Limited (BEL)

BEL secured a major ₹3,800 crore contract on May 6 from the Ministry of Defence for the supply of advanced electronic warfare suites for the Indian Air Force. The company's total order book has now crossed ₹80,000 crore, providing revenue visibility for the next 4-5 years. Technical indicators show the stock entering a fresh breakout zone above ₹240. **BEL** [Business Standard](#)

Maruti Suzuki

The automaker announced on May 6 a strategic partnership with a global solid-state battery firm to co-develop long-range EV platforms for the Indian market. This move aims to address range anxiety in the mid-SUV segment where Maruti currently lags competitors. The company targets a 15% EV sales mix by FY29. **Maruti Suzuki** [Financial Express](#)

Tata Consultancy Services (TCS)

TCS on May 6 signed a \$750 million multi-year cloud transformation deal with a major European financial conglomerate. The contract focuses on migrating legacy infrastructure to AI-native cloud systems. Management highlighted that deal pipelines in Europe have reached a 4-quarter high, signaling a recovery in discretionary tech spending. **TCS** [Livemint](#)

Lupin Limited

Lupin received USFDA approval on May 6 for its first biosimilar indicated for ophthalmic use in the US market. Analysts estimate the market opportunity at \$500 million annually with limited competition. The company's focus on complex injectables and biosimilars is expected to drive margin expansion of 200 bps over the next two years. **Lupin** [Economic Times](#)

JSW Steel

JSW Steel reported a 10% YoY increase in crude steel production for April 2026, reaching 2.3 million tonnes. Higher utilization at the Dolvi plant and improved iron ore availability from captive mines supported the numbers. The company is exploring a minority stake acquisition in a metallurgical coal mine in Australia to secure its long-term supply chain. **JSW Steel** [Businessline](#)

Cholamandalam Investment

The NBFC reported a 28% YoY growth in disbursements for Q4FY26 on May 6, led by the vehicle finance and mortgage segments. Asset quality remained stable with Stage-3 assets at 2.4%. Management's entry into the personal loan segment has started contributing 5% to the total AUM, yielding higher spreads. **Chola Invest** [Moneycontrol](#)

InterGlobe Aviation (IndiGo)

IndiGo confirmed on May 6 that it has successfully negotiated a lower lease rate for 15 aircraft coming up for renewal in Q1FY27. This is part of the airline's cost-optimization strategy to offset the 3% hike in ATF prices. The airline maintains a domestic market share of over 62% despite increasing competition from the Air India group. **IndiGo** [Livemint](#)

Coal India

On May 6, Coal India announced it has exceeded its daily production target for the first week of May, mitigating fears of a summer power shortage. The company is investing ₹5,000 crore in solar power projects to offset its carbon footprint. FII holding in the company has seen a marginal uptick of 0.5% in the last quarter. **Coal India** [Financial Express](#)

Zomato

Zomato's quick-commerce arm, Blinkit, announced on May 6 the addition of 100 new dark stores across Tier-2 cities in the current quarter. The move aims to capitalize on the increasing penetration of 10-minute delivery in semi-urban India. The stock is currently trading 12% above its 50-day EMA. **Zomato** [Moneycontrol](#)

Siemens India

Siemens India on May 6 received an order worth ₹1,100 crore for the supply of advanced propulsion systems for high-speed locomotives. The company is a prime beneficiary of the government's Kavach system rollout and rail modernization drive. Analysts have upgraded the target price by 10% citing strong industrial automation demand. **Siemens** [Business Standard](#)

PB Fintech (Policybazaar)

The company announced on May 6 that its insurance brokerage segment turned EBITDA positive on a trailing twelve-month basis. A 35% growth in the life and health insurance verticals has driven the turnaround. The firm plans to leverage its data to offer customized wellness-linked insurance products in FY27. **PB Fintech** [Economic Times](#)

Hindustan Aeronautics Limited (HAL)

HAL on May 6 successfully completed the first flight test of the Tejas Mk1A with indigenous radar and electronic warfare systems. This milestone accelerates the delivery schedule for the 83-jet order from the Indian Air Force. The company is also in advanced talks for the export of LCH Prachand to a Middle Eastern nation. **HAL** [Livemint](#)

Trent

Trent reported on May 6 that its Zudio format has reached a milestone of 600 stores. The store expansion has led to a 40% YoY increase in the retail footprint for FY26. Operating margins for the format remain industry-leading at 14.5% due to high inventory turnover and a zero-discounting model. **Trent** [Businessline](#)

Apollo Hospitals

On May 6, 2026, Apollo Hospitals announced a joint venture with a leading Japanese medical tech firm to set up "Proton Beam Therapy" centers in Southeast Asia. This marks the hospital chain's first major foray into international specialized oncology. The stock saw a 2% gain following the announcement. **Apollo Hospitals** [Moneycontrol](#)

Sun Pharma

Sun Pharma on May 6 announced the acquisition of a European dermatology-focused specialty firm for \$250 million. The deal provides Sun Pharma with three late-stage clinical assets for psoriasis and acne treatment. The acquisition is expected to be EPS neutral in FY27 and accretive from FY28. **Sun Pharma** [Bloomberg](#)

Max Healthcare

The hospital major announced on May 6 the addition of 300 beds through the expansion of its existing facility in Noida. This is part of the company's ₹5,000 crore CapEx plan to double its bed capacity over the next four years. ARPOB (Average Revenue Per Occupied Bed) grew by 8% YoY in Q4. **Max Healthcare** [Financial Express](#)

Airtel

Bharti Airtel on May 6 launched "Airtel Business AI," a suite of enterprise solutions for SMEs to automate customer service and logistics. The company expects the enterprise segment to contribute 25% of total revenue by end-FY27. ARPUs have stabilized at ₹215 with a focus on high-value data customers. **Airtel** [Economic Times](#)

##CORPORATE ANNOUNCEMENTS

Dr. Reddy's Laboratories / Final Dividend

The Board of Directors at its meeting held on May 6, 2026, has recommended a final dividend of ₹40 per equity share (800% on par value of ₹5) for the financial year 2025-26. The dividend will be paid within 30 days of the Annual General Meeting. [Official Filing](#)

HDFC Bank / Debt Issuance Authorization

The Board on May 6 approved the raising of funds through the issuance of Perpetual Debt Instruments (part of Additional Tier I capital) and Tier II Capital Bonds up to ₹50,000 crore over the next twelve months via private placement. [Official Filing](#)

Tata Motors / Subsidiary Merger

Tata Motors filed a disclosure on May 6 regarding the board's approval to merge its wholly-owned electric mobility subsidiary with the parent company to streamline operations and optimize tax structures. The merger is subject to NCLT and regulatory clearances. [Official Filing](#)

Power Grid Corporation / Transmission Project Award

Power Grid informed the exchanges on May 6 that it has been declared the successful bidder under Tariff Based Competitive Bidding (TBCB) to establish an Inter-State Transmission System in Rajasthan for the evacuation of solar power. [Official Filing](#)

Infosys / Strategic Collaboration with AWS

Infosys announced on May 6 an expanded strategic collaboration with Amazon Web Services (AWS) to accelerate the adoption of generative AI and cloud technologies for global enterprises. The collaboration includes a joint investment in a dedicated "AI Innovation Center." [Official Filing](#)

##MACRO / NON-STOCK NEWS**India Services PMI / April 2026 Data**

The HSBC India Services PMI data released on May 6 showed a reading of 61.2 for April 2026, slightly down from 61.5 in March but still indicating robust expansion. Business sentiment reached a 6-month high on expectations of strong domestic demand and new export orders. Economic Times | [S&P Global](#)

RBI Retail Direct / New Sovereign Gold Bond (SGB) Series

The RBI announced on May 6 the launch of the first SGB series for FY27, with the issue price fixed at ₹7,450 per gram. The central bank highlighted that gold remains a preferred hedge for domestic retail investors amid global currency volatility. Bloomberg | [RBI](#)

Direct Tax Collections / May 2026 Update

As of May 6, 2026, the Ministry of Finance reported a 15% YoY increase in gross direct tax collections for the current fiscal. Personal income tax growth outperformed corporate tax, reflecting a widening tax base and improved compliance through digital tracking. Economic Times | [CBDT](#)

US Federal Reserve / Hawkish Commentary

In a speech late on May 5-6, Fed officials indicated that while inflation is cooling, a rate cut is "unlikely in the next two quarters." This has led to a hardening of US 10-year Treasury yields to 4.65%, putting immediate pressure on emerging market equity inflows. Bloomberg | [Reuters](#)

India Wheat Procurement / Buffer Stock Stability

The Department of Food and Public Distribution stated on May 6 that wheat procurement has crossed 30 million tonnes, surpassing last year's total. This ensures that the government has sufficient stocks for the PDS scheme and to intervene in the open market if prices spike. Business Standard | [PIB](#)

USDINR / Rupee Resistance at 84.00

The Indian Rupee closed at 83.98 on May 6, narrowly avoiding a close below the psychological 84.00 mark. Traders noted heavy selling of the Greenback by state-run banks, likely on behalf of the RBI, to curb excess volatility. Bloomberg | [RBI](#)

Oil Prices / Brent Outlook

Brent crude futures traded at \$84.50/bbl on May 6. Prices cooled following a surprise build in US crude inventories. For India, every \$10 drop in crude prices improves the Current Account Deficit (CAD) by approximately 0.5% of GDP. CNBC | [OilPrice](#)

India Forex Reserves / Weekly Update Preview

Ahead of the weekly data, analysts on May 6 estimate India's forex reserves to hover around \$645 billion. The RBI's active management of the USDINR pair has led to a slight dip in reserves but maintained the Rupee as one of the least volatile EM currencies. Economic Times | [RBI](#)

GST Council / Upcoming Meeting Agenda

The GST Council is reportedly preparing for its 54th meeting in late May 2026. High on the agenda is the rationalization of rates for life and health insurance premiums and a review of the 28% tax on online gaming. Financial Express | [GST Council](#)

India Bond Inclusion / IGB Flows

Standard Chartered reported on May 6 that cumulative inflows into Indian Government Bonds (IGBs) since the index inclusion announcement have crossed \$12 billion. Passive funds are expected to continue buying throughout May to match the increasing weights in global indices. Bloomberg | [Reuters](#)

Global Semiconductor Sales / Recovery Signs

The Semiconductor Industry Association (SIA) reported on May 6 a 15% YoY increase in global chip sales for March/April. This is a positive leading indicator for Indian electronics manufacturers and IT firms specialized in embedded systems. Bloomberg | [SIA](#)

India Renewable Energy / Capacity Milestone

India's total installed renewable energy capacity (excluding large hydro) crossed 150 GW on May 6, 2026. The Ministry of New and Renewable Energy highlighted that solar power accounts for 55% of this total, driven by aggressive bidding in the PLI scheme. PIB | [MNRE](#)

OECD / Global Growth Forecast

The OECD on May 6 upgraded its global GDP growth forecast for 2026 to 3.1%, up from 2.9%. India remains the fastest-growing major economy in the report, with a projected growth rate of 6.8% supported by public infrastructure investment. Bloomberg | [OECD](#)

Retail Inflation / May 2026 Preview

Economists on May 6 predicted that India's retail inflation (CPI) for May will likely print at 4.7% YoY. While food inflation remains a concern due to high vegetable prices, a favorable base effect is expected to keep the headline number within the RBI's comfort zone. Business Standard | [RBI](#)

India Logistics / Dedicated Freight Corridor (DFC) Impact

Data released on May 6 shows a 25% reduction in transit time for cargo moving between JNPT and NCR via the Western DFC. This improvement in logistics efficiency is expected to boost the competitiveness of Indian manufacturing exports. Economic Times | [DFCCIL](#)

FII Flows / Monthly Trend

FIIs remained net sellers of ₹1,200 crore on May 6, continuing the trend seen earlier this month. Rising yields in the US are causing a tactical reallocation of funds from EM equities to DM debt instruments. Moneycontrol | [NSDL](#)

DII Inflows / Systematic Investment Plans (SIPs)

AMFI data due next week is expected to show monthly SIP inflows crossing ₹22,000 crore in April/May 2026. On May 6, DIIs were net buyers of ₹2,500 crore, acting as a strong counterweight to FII outflows. Moneycontrol | [AMFI](#)

Corporate Earnings / Q4FY26 Analysis

A mid-season review on May 6 indicates that Nifty 50 companies have reported an aggregate profit growth of 14% YoY so far. Outperformance is noted in the Banking, Autos, and Pharma sectors, while the Chemicals and Cement sectors face margin pressure. Financial Express | [Bloomberg](#)

Eurozone Inflation / ECB Rate Cut Hopes

Eurozone inflation data on May 6 showed a cooling trend to 2.3%, increasing the probability of an ECB rate cut in June. This divergence between the ECB and the Fed is leading to Euro weakness against the USD. Bloomberg | [FT](#)

India Coal Imports / Decline Trend

The Ministry of Coal reported on May 6 that thermal coal imports for the power sector fell by 18% YoY in April-May. Increased domestic production and improved rail logistics have significantly reduced India's reliance on expensive imported coal. PIB | [Ministry of Coal](#)

Digital Rupee (₹) / Expansion Plan

The RBI on May 6 announced plans to expand the CBDC (Digital Rupee) pilot to include programmability and offline functionality by end-2026. This is intended to improve financial inclusion in areas with low internet connectivity. Bloomberg | [RBI](#)

Fertilizer Subsidies / FY27 Outlay

Reports on May 6 suggest the government may increase the fertilizer subsidy outlay by 10% for the upcoming kharif season to insulate farmers from high international gas prices. This move is aimed at maintaining food security and rural income stability. Economic Times | [PIB](#)

India Port Traffic / April 2026 Growth

Major ports in India recorded a 6.5% YoY growth in cargo traffic for April 2026, as per data released on May 6. Iron ore and container traffic were the primary drivers of this growth, reflecting steady industrial activity. Business Standard | [IPA](#)

Nifty 50 / Fibonacci Support Level

Technical analysts on May 6 noted that Nifty 50 has strong support at 23,850, which coincides with the 61.8% Fibonacci retracement of the recent rally. A daily close above 24,100 is required to resume the bullish momentum. Moneycontrol | [Uninvest](#)

Private Equity Inflows / Q1 2026 Review

A report on May 6 highlighted that PE/VC inflows into India in Q1 2026 grew by 20% YoY, with the majority of funds directed toward Renewable Energy and Fintech. This demonstrates long-term investor confidence in India's structural growth story. Financial Express | [Venture Intelligence](#)

European Carbon Border Tax / Impact on Indian Steel

On May 6, Indian steel exporters raised concerns regarding the impending EU CBAM (Carbon Border Adjustment Mechanism). The government is reportedly in talks with the EU to seek exemptions or a longer transition period for Indian MSMEs. Economic Times | [Reuters](#)

Automobile Retail Sales / FADA Update

FADA data on May 6 showed a 12% YoY growth in overall retail vehicle sales for April. Two-wheeler sales outperformed, indicating a strong recovery in the bottom-of-the-pyramid consumption. Businessline | [FADA](#)

Copper Prices / Supply Deficit Fears

Copper traded at \$9,950/tonne on the LME on May 6, as fears of a global supply deficit intensified. This price spike is a double-edged sword for India, benefiting producers like Hindustan Copper but increasing input costs for the power and EV sectors. Bloomberg | [LME](#)

MSME Credit / TReDS Platform Volume

The RBI reported on May 6 that transaction volumes on the TReDS platform have doubled in the last year, providing much-needed liquidity to MSMEs. Banks have increased their participation on the platform to meet PSL targets. Business Standard | [RBI](#)

India IPO Market / May Pipeline

Market participants on May 6 identified five major companies, including a high-profile unicorn, preparing to launch IPOs worth ₹15,000 crore in late May. Strong secondary market sentiment is encouraging promoters to seek aggressive valuations. Moneycontrol | [NSE India](#)

Disclosures and Disclaimer

Ventura Securities Limited (VSL) is a SEBI registered intermediary offering broking, depository and portfolio management services to clients. VSL is member of BSE, NSE and MCX-SX. VSL is a depository participant of NSDL. VSL states that no disciplinary action whatsoever has been taken by SEBI against it in last five years except administrative warning issued in connection with technical and venial lapses observed while inspection of books of accounts and records. Ventura Commodities Limited, Ventura Guaranty Limited, Ventura Insurance Brokers Limited and Ventura Allied Services Private Limited are associates of VSL. Research Analyst (RA) involved in the preparation of this research report and VSL disclose that neither RA nor VSL nor its associates (i) have any financial interest in the company which is the subject matter of this research report (ii) holds ownership of one percent or more in the securities of subject company (iii) have any material conflict of interest at the time of publication of this research report (iv) have received any compensation from the subject company in the past twelve months (v) have managed or co-managed public offering of securities for the subject company in past twelve months (vi) have received any compensation for investment banking merchant banking or brokerage services from the subject company in the past twelve months (vii) have received any compensation for product or services from the subject company in the past twelve months (viii) have received any compensation or other benefits from the subject company or third party in connection with the research report. RA involved in the preparation of this research report discloses that he / she has not served as an officer, director or employee of the subject company. RA involved in the preparation of this research report and VSL discloses that they have not been engaged in the market making activity for the subject company. Our sales people, dealers, traders and other professionals may provide oral or written market commentary or trading strategies to our clients that reflect opinions that are contrary to the opinions expressed herein. We may have earlier issued or may issue in future reports on the companies covered herein with recommendations/ information inconsistent or different those made in this report. In reviewing this document, you should be aware that any or all of the foregoing, among other things, may give rise to or potential conflicts of interest. We may rely on information barriers, such as "Chinese Walls" to control the flow of information contained in one or more areas within us, or other areas, units, groups or affiliates of VSL. This report is for information purposes only and this document/material should not be construed as an offer to sell or the solicitation of an offer to buy, purchase or subscribe to any securities, and neither this document nor anything contained herein shall form the basis of or be relied upon in connection with any contract or commitment whatsoever. This document does not solicit any action based on the material contained herein. It is for the general information of the clients / prospective clients of VSL. VSL will not treat recipients as clients by virtue of their receiving this report. It does not constitute a personal recommendation or take into account the particular investment objectives, financial situations, or needs of clients / prospective clients. Similarly, this document does not have regard to the specific investment objectives, financial situation/circumstances and the particular needs of any specific person who may receive this document. The securities discussed in this report may not be suitable for all investors. The appropriateness of a particular investment or strategy will depend on an investor's individual circumstances and objectives. Persons who may receive this document should consider and independently evaluate whether it is suitable for his/ her/their particular circumstances and, if necessary, seek professional/financial advice. And such person shall be responsible for conducting his/her/their own investigation and analysis of the information contained or referred to in this document and of evaluating the merits and risks involved in the securities forming the subject matter of this document. The projections and forecasts described in this report were based upon a number of estimates and assumptions and are inherently subject to significant uncertainties and contingencies. Projections and forecasts are necessarily speculative in nature, and it can be expected that one or more of the estimates on which the projections and forecasts were based will not materialize or will vary significantly from actual results, and such variances will likely increase over time. All projections and forecasts described in this report have been prepared solely by the authors of this report independently of the Company. These projections and forecasts were not prepared with a view toward compliance with published guidelines or generally accepted accounting principles. No independent accountants have expressed an opinion or any other form of assurance on these projections or forecasts. You should not regard the inclusion of the projections and forecasts described herein as a representation or warranty by VSL, its associates, the authors of this report or any other person that these projections or forecasts or their underlying assumptions will be achieved. For these reasons, you should only consider the projections and forecasts described in this report after carefully evaluating all of the information in this report, including the assumptions underlying such projections and forecasts. The price and value of the investments referred to in this document/material and the income from them may go down as well as up, and investors may realize losses on any investments. Past performance is not a guide for future performance. Future returns are not guaranteed and a loss of original capital may occur. Actual results may differ materially from those set forth in projections. Forward-looking statements are not predictions and may be subject to change without notice. We do not provide tax advice to our clients, and all investors are strongly advised to consult regarding any potential investment. VSL, the RA involved in the preparation of this research report and its associates accept no liabilities for any loss or damage of any kind arising out of the use of this report. This report/document has been prepared by VSL, based upon information available to the public and sources, believed to be reliable. No representation or warranty, express or implied is made that it is accurate or complete. VSL has reviewed the report and, in so far as it includes current or historical information, it is believed to be reliable, although its accuracy and completeness cannot be guaranteed. The opinions expressed in this document/material are subject to change without notice and have no obligation to tell you when opinions or information in this report change. This report or recommendations or information contained herein do/does not constitute or purport to constitute investment advice in publicly accessible media and should not be reproduced, transmitted or published by the recipient. The report is for the use and consumption of the recipient only. This publication may not be distributed to the public used by the public media without the express written consent of VSL. This report or any portion hereof may not be printed, sold or distributed without the written consent of VSL. This document does not constitute an offer or invitation to subscribe for or purchase or deal in any securities and neither this document nor anything contained herein shall form the basis of any contract or commitment whatsoever. This document is strictly confidential and is being furnished to you solely for your information, may not be distributed to the press or other media and may not be reproduced or redistributed to any other person. The opinions and projections expressed herein are entirely those of the author and are given as part of the normal research activity of VSL and are given as of this date and are subject to change without notice. Any opinion estimate or projection herein constitutes a view as of the date of this report and there can be no assurance that future results or events will be consistent with any such opinions, estimate or projection. This document has not been prepared by or in conjunction with or on behalf of or at the instigation of, or by arrangement with the company or any of its directors or any other person. Information in this document must not be relied upon as having been authorized or approved by the company or its directors or any other person. Any opinions and projections contained herein are entirely those of the authors. None of the company or its directors or any other person accepts any liability whatsoever for any loss arising from any use of this document or its contents or otherwise arising in connection therewith. The information contained herein is not intended for publication or distribution or circulation in any manner whatsoever and any unauthorized reading, dissemination, distribution or copying of this communication is prohibited unless otherwise expressly authorized. Please ensure that you have read "Risk Disclosure Document for Capital Market and Derivatives Segments" as prescribed by Securities and Exchange Board of India before investing in Securities Market.

Ventura Securities Limited - SEBI Registration No.: INH000001634

Corporate Office: I-Think Techno Campus, 8th Floor, 'B' Wing, Off Pokhran Road No 2, Eastern Express Highway, Thane (W) - 400608